

## F37610 DOUBLE GUITAR BASE (Sold without Frames)



**F37610 DOUBLE GUITAR BASE**  
(Sold without Frames)



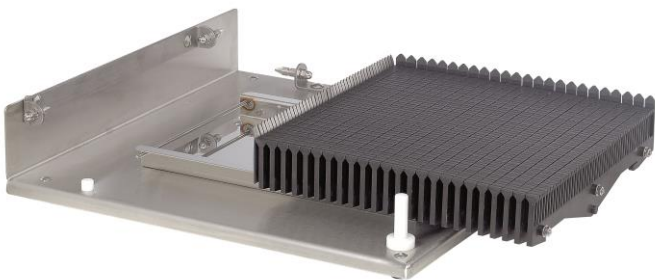
**F37611 CUTTING FRAME N°1 - 15 mm - color Red arm**  
**F37612 CUTTING FRAME N°2 -22.5 mm - color Green arm**  
**F37613 CUTTING FRAME N°3 -30 mm - color yellow arm**

The essential guitar Kali twice recommended by the greatest chocolatiers and pastry chefs  
The guitar will let you perform Kali cuts fast and regular chocolates, candies, ganache, marzipan, fruit jellies, sofas square, rhombus, rectangle ...

**Chocolate cutting surface for cutting in one direction with multiples of 7.5 mm and in the other direction multiples of 22.5 mm.**

### Specifications Guitar KALI

- Base and cutting arm in s/steel
- The arm sections are easily interchangeable, in meplat manufacture of s/steel, preventing water from entering during the washing ; providing perfect hygiene
- The arm cuts are easily interchangeable – purchase separately
- The wires are very robust and easy to assemble
- Cutting surface of 360 x 360 mm plastic composite.
  - Cutting arm N°1 RED : spacing of 15 mm can be positioned in on sense
  - Cutting arm N°2 GREEN : spacing of 22,5 mm can be positioned in both directions cutting
  - Cutting arm N°3 YELLOW : spacing of 30 mm can be positioned in on sense
- For larger cuts, the wires can be removed depending on your cuts.



**Chocolate cutting surface**  
**left side with multiple cutting of 7.5 mm**  
**right side with multiple cutting of 22.5 mm**

Cutting surface 360 x 360 mm in plastic composite ; very easy to clean, the cutting surface is removable very easy **and goes in the dishwasher**